

Bufferblock product information

The patented Bufferblock is designed as a stormwater drainage system for the urban area.

The Bufferblocks are placed underneath permeable paving and have a water storage capacity of 266 liters per square meter.

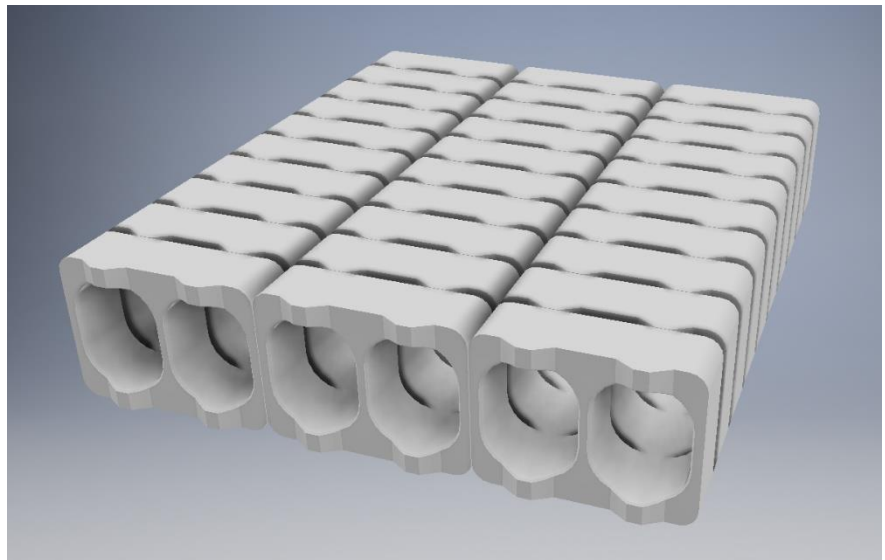
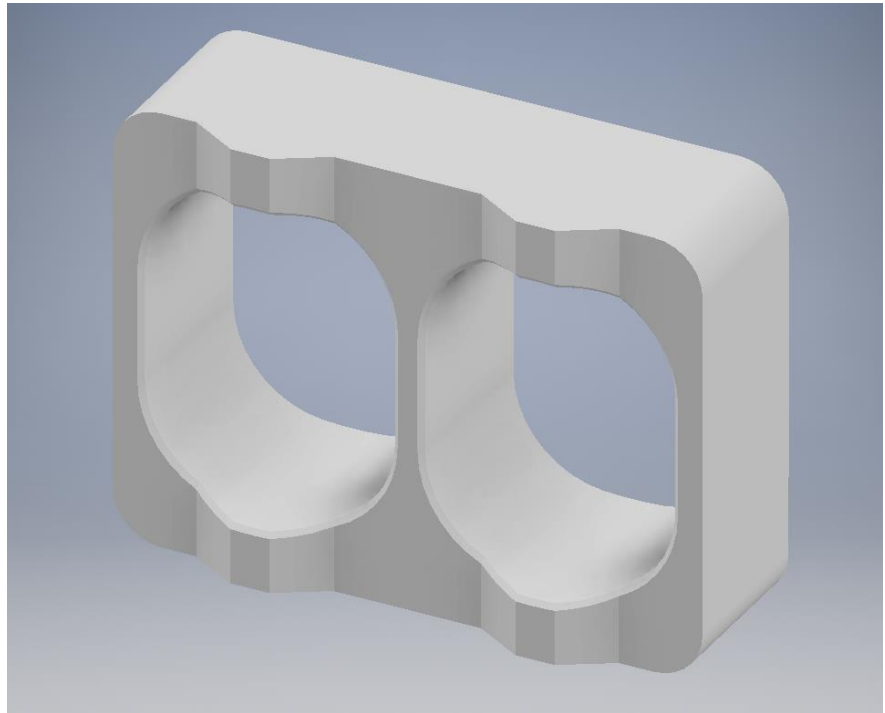
The Bufferblocks are made of concrete and are strong enough to withstand heavy traffic loads with only a thin layer of permeable sand and pavers.

Because of the high strength of the Bufferblocks a much thinner layer of ground coverage is needed than plastic infiltration crates. Therefore the Bufferblocks have more water storage capacity in less height than other stormwater drainage systems.

The concrete Bufferblocks are easy to produce and are more cost effective than infiltration crates.

The Bufferblocks are designed to be inspected and cleaned by commonly used sewer inspection equipment.

Because of the hollow spaces, the blocks are relatively light weight (approx. 950 kg/m³) and are therefore suitable as light weight fill material in areas with settlement problems because of weak/compressible soils.

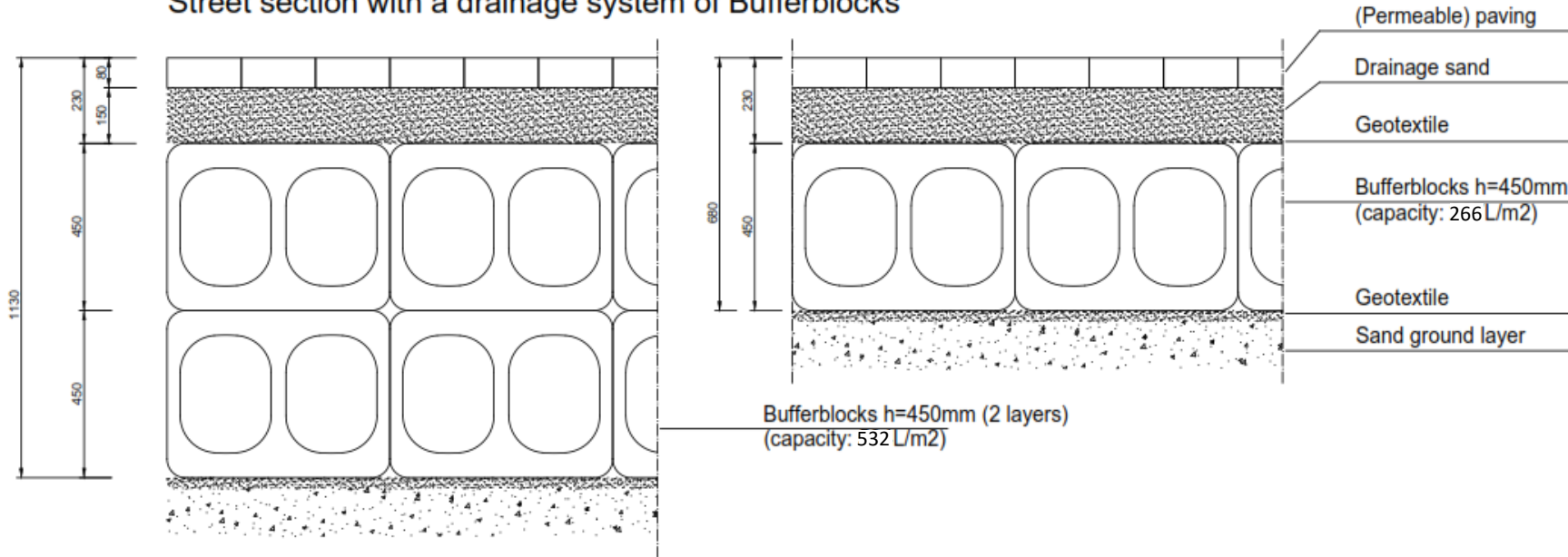


Bufferblock

www.bufferblock.nl

Comparisment of a stormwater drainage system of Bufferblocks and infiltration crates

Street section with a drainage system of Bufferblocks



Street section with a stormwater drainage system of infiltration crates

